

TRADITION AND INNOVATION – 169 YEARS OF KERN

Independent and family-run, KERN is already in its 6th generation and is synonymous with quality and reliability in customer service.

FAST

- 24 hours delivery service – order today, on its way tomorrow
- Sales & service hotline from 8:00 am to 6:00 pm

COMPETENT

- DKD accreditation (DIN EN ISO/IEC 17025)
- QM system (DIN EN ISO 9001:2008)
- Initial verification by the manufacturer (2009/23/ECC)
- Medical (DIN EN ISO 13485 & 93/42/EWG)

RELIABLE

- 2+ years warranty
- Precision in weighing technology for the last 169 years

DIVERSE

- One-stop shopping: from pocket balances through to floor scales – everything from one supplier
- Find the balance you want in no time with the „Balance Quick-Finder“



KERN – Professional measuring.

Printed in Germany
z-ob-gb-nn-201301



DISPLAY DEVICES / WEIGHING BRIDGES



GB

2013

11 Display devices / Weighing bridges

Individuality is the trump card

Do you have any special requests, which are not covered by our extensive balance range? Then why not configure your ideal model yourself, it's quick, individual and affordable.

It's your choice:

- Choose one of the many KERN weighing bridges, pallet scales or drive-through scales and combine these with one of the many KERN display devices
- Combine **your** weighing bridge with a KERN display device
- Combine **your** display device with a KERN weighing bridge

With KERN get your ideal balance verified too

To help you achieve a verified individual scale combination KERN offers you full support, such as for example

- Production of proof of compatibility, see page 111
- Support in preparing for verification, EC type approval, setup conditions
- Issue of declaration of conformity upon conformity evaluation (manufacturer's initial verification)



Of course we can also offer you the complete service and put the required scale combination together for you, including verification. All further details can be found on the following pages or ask your personal customer service agent, he will be pleased to advise you.

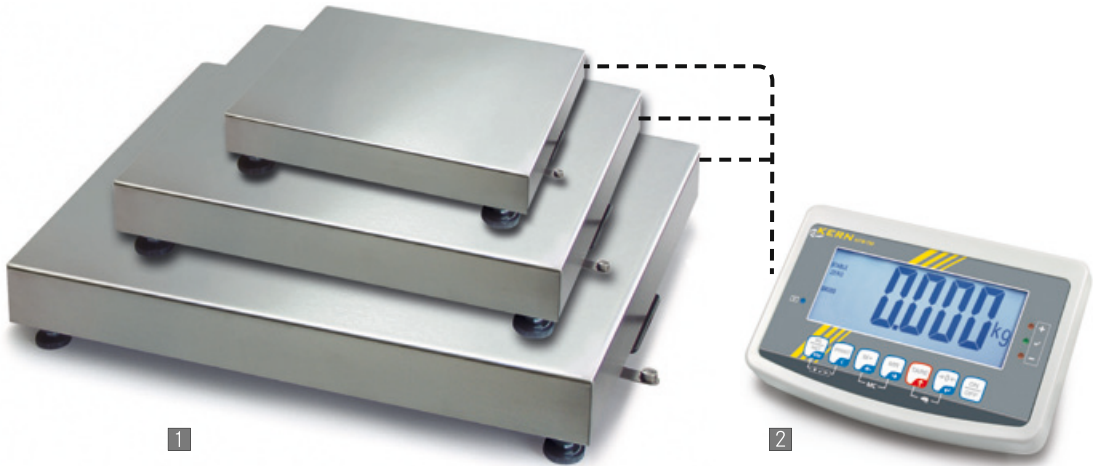
KERN Model	Page
Individual scale combinations	111
Verification consultation	111
Display devices	
KDE-T	112
KXE-TM	112
KFS-T	112
KFB-TM	113
KFE-TM	113
KFN-TM	113
Platforms, Weighing bridges	
Platform KFP V20	114
Weighing bridge KFP V20	114
Weighing bridge KFP V40	114
Weighing bridge KFD	115
U-Weighing bridge KFU V20/V30	115
Weighing beams KFA	115



Your KERN product specialist will be happy to help:

Stephan Ade
Product specialist Industrial scales

KERN Components



You select the KERN-components, KERN will look after the rest:

- 1 Platforms KERN KFP etc. (see page 114/115)
- 2 Display devices KFB-TM etc. (see page 112/113)
- 3 Assembly of a complete scale
- 4 Proof of compatibility for on-site verification
- 5 Verification at the factory KERN

Components for individual scale combinations

STANDARD

FACTORY

Services	KERN	
(Installation of platform and display device. DKD calibration certificate for complete scales free of charge.)		
1 KERN Platform, see page 114/115		
2 KERN Display devices, see page 112/113		
Assembly to complete scale		
3 Weighing ranges max ≤ 150 kg	930-101	
3 Weighing ranges max > 150 – 600 kg	930-102	
3 Weighing ranges max > 600 – 1500 kg	930-103	
3 Weighing ranges max > 1500 kg	930-104	
Additional price for verification ex works		
4 Proof of compatibility	965-240	
5 Weighing ranges max ≤ 5 kg	965-227	
5 Weighing ranges max > 5 kg – 50 kg	965-228	
5 Weighing ranges max > 50 kg – 350 kg	965-229	
5 Weighing ranges max > 350 kg – 1500 kg	965-230	
5 Weighing ranges max > 1500 kg – 3000 kg	965-232	

Order example	KERN	
(Platform KFP 30V20M and display device KFB-TM)		
1 KERN Platform	KFP 30V20M	
2 KERN Display devices	KFB-TM	
3 Assembly of a complete scale		
Weighing ranges max ≤ 150 kg	930-101	
4 Proof of compatibility	965-240	
5 Verification ex works KERN	965-228	
Complete scale (verified)		



For further combinations in the KERN product range, please ask for details.

Verification consultation service for individual scale combinations

Information for specialist balance companies:

If display devices (terminals) with EC-Type approval and weighing bridges (e.g. pallet scales, floor scales or drive-through scales) with EC-Type approval are combined as a complete unit, then this weighing system can be verified as a class III commercial scale.

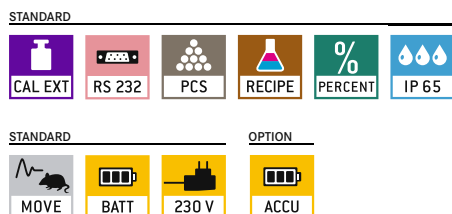
For this procedure KERN offers the following support:

- 4 Proof of compatibility: We will confirm whether combinations of weighing modules such as display devices, load cells and connecting elements are appropriate for verification. We would be pleased to carry this out for you.
- Authorisation for initial verification by the manufacturer: We will support you in your preparations for verification, issuing the declaration of conformity and be involved with the manufacturer's initial verification.

Display devices KERN KDE · KXE-TM · KFS-T



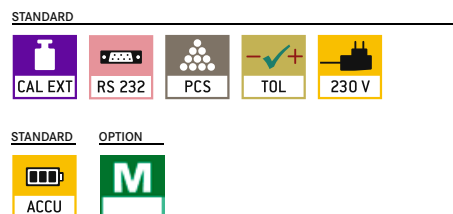
1 KERN KDE-T



2 KERN KXE-TM



3 KERN KFS-T



KERN evaluation devices for many platforms – innovative technology, to construct your own weighing system. Can be used in any combination, e.g. with all platforms on page 114/115

Features	Models KERN		
	1 KDE-T	2 KXE-TM	3 KFS-T
Characteristics	Multi functional scale, protected by IP65	Affordable display device with EC-type Approval [M]	Professional display device with 3 displays
Display (segments)	6 digits	6 digits	6 digits
EC type approval	-	yes	-
Resolution verifiable	-	3.000 e	-
Resolution non verifiable	2 x 20.000 d	30.000 d	2 x 60.000 d
Weighing ranges	≤ 2	≤ 2	≤ 2
Weighing units	g, kg, lb, oz	kg	kg
Graduations	1, 2, 5, 10	1, 2, 5, 10, n	1, 2, 5, ... 10, n
Piece counting with reference	5, 10, 20, 25, 50	-	n
Display, digit height	backlit LCD display, 25 mm	backlit LCD display, 25 mm	backlit LCD display, 13/16,5 mm
Additional functions	PRE-TARE function	Data Hold function, PRE-TARE function	Totalizing
WSG load cells	87 - 1600 Ω		
Linearisation	4 points	-	5 points
Input voltage	100-240 V, 50/60 Hz	120-230 V, 50/60 Hz	12 V / 500 mA
Permissible ambient temperature	5 °C / 35 °C	0 °C / 40 °C	0 °C / 40 °C
Interface RS 232	yes	-	yes
Column	-	-	BFS-A07, see page 104
Benchtop stand for display device	DE-A13	yes / yes	yes / yes
Wall mount	DE-A12, see page 95	-	KFB-A02, see page 96
Rechargeable battery pack	NDE-A02, see page 95	-	KFS-A01, see page 96
Operating/charging time	ca. 15 h / 10 h	-	ca. 40 h / 12 h
Dimensions Housing WxDxH	225x110x45 mm	193x94x50 mm	260x150x65 mm
Net weight	1 kg	1 kg	1,5 kg



NOTE: If display devices and platforms (weighing bridges) with EC type approval [M] are combined into a complete unit, this weighing system can be verified in the EU as a class III commercial scale. For further details see page 111.

WARRANTY



READY FOR SHIPPING

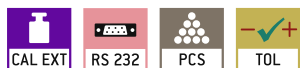


Display devices KERN KFB-TM · KFE-TM · KFN-TM



4 KERN KFB-TM

STANDARD



STANDARD



5 KERN KFE-TM

STANDARD



STANDARD



6 KERN KFN-TM

STANDARD



STANDARD



KERN evaluation devices for many platforms – innovative technology, to construct your own weighing system. Can be used in any combination, e.g. with all platforms on page 114/115

Features	Models KERN		
	4 KFB-TM	5 KFE-TM	6 KFN-TM
Characteristics	Display device with large digits - easy to read	Stainless steel, protected by IP65	Display device made from stainless steel with IP65 protection
Display (segments)	5 + ½ digts	6 digts	5 + ½ digts
EC type approval	yes	yes	-
Resolution verifiable	6.000 e	6.000 e	6.000 e
Resolution non verifiable	30.000 d	30.000 d	30.000 d
Weighing ranges	≤ 2	≤ 2	≤ 2
Weighing units	kg	-	kg
Graduations	1, 2, 5, 10, n	1, 2, 5, 10, n	1, 2, 5, 10, n
Piece counting with reference	-	-	-
Display, digit height	backlit LCD display, 52 mm	backlit LCD display, 22 mm	backlit LCD display, 52 mm
Additional functions	Totalizing, hold function		Totalizing, hold function
WSG load cells	87 - 1600 Ω	87 - 350 Ω	87 - 1600 Ω
Linearisation	2 points	2 points	2 points
Input voltage	12 V / 500 mA	200-240 V, 50 Hz	100-240 V, 50/60 Hz
Permissible ambient temperature	0° C / 40° C (not verified) -10° C / 40° C (verified)	- 10 °C / 40 °C	0° C / 40° C (not verified) -10° C / 40° C (verified)
Interface RS 232	yes	-	KFN-A01, see page 72
Column	BFS-A07, see page 104	-	BFS-A07, see page 104
Benchttop stand for display device	yes / yes	yes / yes	yes / yes
Wall mount	KFB-A02, see page 97	-	-
Rechargeable battery pack	KFB-A01, see page 97	included	included
Operating/charging time	ca. 35 h / 12 h	ca. 45 h / 12 h	ca. 50 h / 12 h
Dimensions Housing WxDxH	250x160x58 mm	195x118x83 mm	266x165x96 mm
Net weight	1,5 kg	1 kg	2 kg



NOTE: If display devices and platforms (weighing bridges) with EC type approval [M] are combined into a complete unit, this weighing system can be verified in the EU as a class III commercial scale. For further details see page 111.

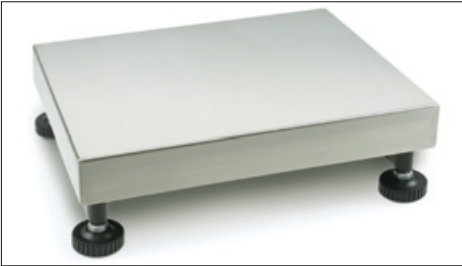
WARRANTY



READY FOR SHIPPING



Platforms KERN KFP



1 KERN KFP V20

STANDARD

OPTION

IP 65

2 DAYS

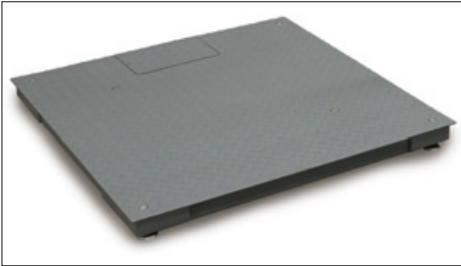
2 YEARS
WARRANTY

M

- **Stainless steel-weighing plate**, Painted steel base
- **1 load cell, aluminium, silicone-coated, IP65, OIML-approved**, class III, 3000 e
- **Level indicator and foot screws** to level the balance precisely, fitted as standard, to give the most accurate weighing results



1



2 KERN KFP V20

STANDARD

OPTION

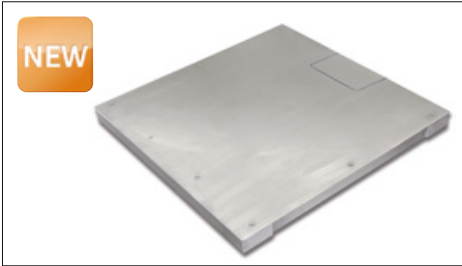
IP 67

2 DAYS

3 YEARS
WARRANTY

M

- **Weighing bridge with non-slip steel chequer plate**, lacquered, extremely resistant to bending. Painted steel base
- **4 Load cells, steel, silicone-coated, IP67, OIML-R60-approval for verification**, class III, 3000 e
- Can be built in using pit frames (optional)
- **Level indicator and foot screws** to level the balance precisely, fitted as standard, to give the most accurate weighing results
- **Easy access to the junction box** from the top
- **Comfortable adjustment of the weighing bridge** from above
- Accessories page 104/105 (KERN BFS/BFB)



3 KERN KFP V40

STANDARD

OPTION

IP 68

2 DAYS

3 YEARS
WARRANTY

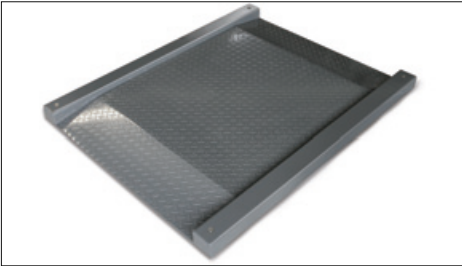
M

- **Weighing bridge entirely out of stainless steel**, extremely resistant to bending because of its high material thickness
- Weighing plate fixed with stainless steel screws, so that it is easier to access the loadcells from above
- **1 Load cell, stainless steel, welded, IP68, OIML-approved**, class III, 3000 e
- Can be built in using pit frames (optional)
- **Level indicator and foot screws** to level the balance precisely, fitted as standard, to give the most accurate weighing results
- **Easy access to the junction box** from the top
- **Comfortable adjustment of the weighing bridge** from above

Can be used in any combination, e.g. with all display devices on page 112 ff.

Modell	Weighing range [Max] kg	Read-out [d] g	Verific. value [e] g	Min. load [Min] g	Add. preload kg	Cabel length approx. m	Net weight approx. kg	Weighing plate mm	
1 Platform KERN KFP V20									
KFP 6V20M	6	2	2	40	1	2,5	3,7	230x230x100	
KFP 6V20LM	6	2	2	40	2	2,5	4,6	300x240x100	
KFP 15V20M	15	5	5	100	2	2,5	4,6	300x240x100	
KFP 30V20M	30	10	10	200	10	2,5	9,7	400x300x128	
KFP 60V20M	60	20	20	400	35	2,5	9,7	400x300x128	
KFP 60V20LM	60	20	20	400	30	2,5	14,25	500x400x137	
KFP 150V20M	150	50	50	1000	90	2,5	14,25	500x400x137	
KFP 150V20LM	150	50	50	1000	136	2,5	20,75	650x500x142	
KFP 300V20M	300	100	100	2000	186	2,5	20,75	650x500x142	
2 Weighing bridge KERN KFP V20									
KFP 600V20SM	600	200	200	4000	120	5	105	1000x1000 x80	
KFP 600V20M	600	200	200	4000	120	5	175	1500x1250 x80	
KFP 1500V20SM	1500	500	500	10000	300	5	105	1000x1000 x80	
KFP 1500V20M	1500	500	500	10000	300	5	175	1500x1250 x80	
KFP 3000V20M	3000	1000	1000	20000	500	5	175	1500x1250 x80	
KFP 3000V20LM	3000	1000	1000	20000	500	5	195	1500x1500 x80	
3 Weighing bridge KFP V40									
KFP 1500V40M	1500	500	500	10000	300	5	175	1500x1250 x80	

Platforms KERN KFD · KFU · KFA



4 KERN KFD

STANDARD

OPTION

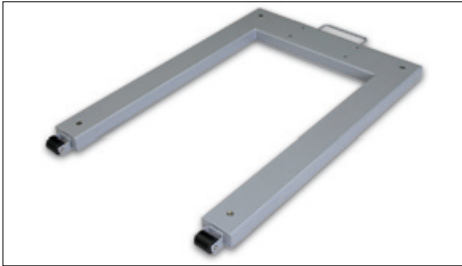
 IP 67

 2 DAYS

 3 YEARS WARRANTY

 M

- Weighing bridge with non-slip steel chequer plate, lacquered, two access ramps integrated, extremely resistant to bending
- Extremely flat construction facilitate access: access height only 45 mm
- 4 Load cells, steel, silicone-coated, IP67, OIML-approved, class III, 3000 e



5 KERN KFU V20/V30

STANDARD

OPTION

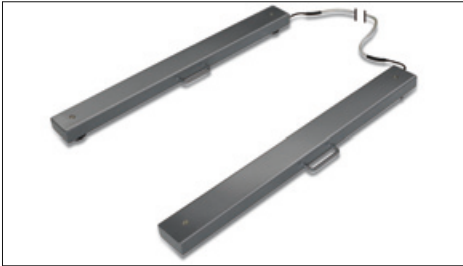
 IP 67

 2 DAYS

 3 YEARS WARRANTY

 M

- Load area: painted steel (V20), stainless steel (V30)
- 4 load cells, steel, silicone-coated, IP67, OIML-R60-approval for verification, class III, 3000e
- 2 rollers and handle for easy transport of the scale
- Accessories see page (KERN UFA)



6 KERN KFA V20

STANDARD

OPTION

 IP 67

 2 DAYS

 3 YEARS WARRANTY

 M

- Weighing beams and painted steel base
- 4 load cells, steel, silicone-coated, IP67
- Foot screws to level the weighing beams precisely
- Accessories page 107 (KERN UFA)

Can be used in any combination, e.g. with all display devices on page 112 ff.

Modell	Weighing range [Max] kg	Read-out [d] g	Verific value [e] g	Min. load [Min] g	Add. preload kg	Cabel length approx. m	Net weight approx. kg	Weighing plate mm	
4 Drive-through scale KERN KFD									
KFD 600V20M	600	200	200	4000	120	5	131	1600x1200x45	
KFD 600V20LM	600	200	200	4000	120	5	175	1600x1200x45	
KFD 1500V20M	1500	500	500	10000	300	5	131	1600x1200x45	
KFD 1500V20LM	1500	500	500	10000	300	5	175	1600x1200x45	
5 U-shaped weighing bridge KERN KFU									
KFU 600V20M	600	200	200	4000	120	5	41	900x1300x90	
KFU 1500V20M	1500	500	500	10000	300	5	41	900x1300x90	
Edelstahl									
KFU 600V30M	600	200	200	4000	120	5	42	900x1300x90	
KFU 1500V30M	1500	500	500	10000	300	5	42	900x1300x90	
6 Weighing beams KERN KFA									
KFA 1500V20	1500	500	-	-	300	5	35	2x 1200x120x100	
KFA 3000V20	3000	1000	-	-	500	5	35	2x 1200x120x100	